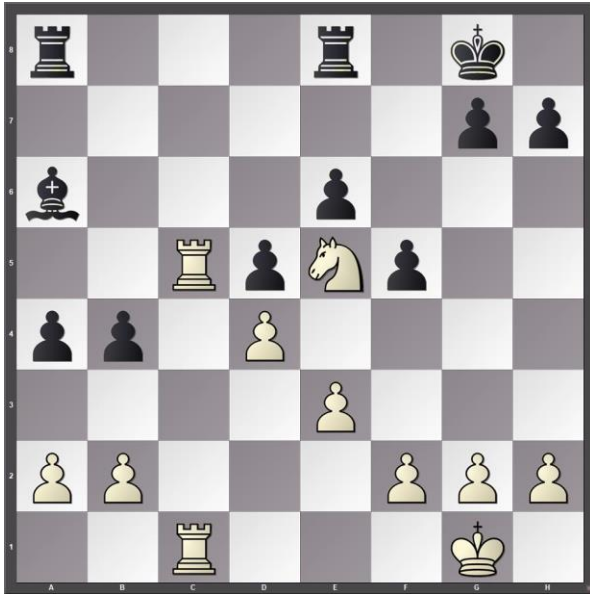


Program: Complex Middlegames
Class 1: Double-Edged Bishops



1. Black to move.

- A) Evaluate Ba6.
- B) What is the evaluation of the position?



2. Black to move.

- A) Evaluate Bb2 and Bg6.
- B) Make sense of Petrosian's famous exchange sacrifice **25...Re6**.



3. Black to move.

- A) Evaluate Bc1 and Bc8.
- B) Make sense of the continuation **9...Bb4 10.Bd2 Bxc3 11.Bxc3 Be6**.



4. White to move.

- A) Evaluate Bb2.
- B) What is White's plan here?



5. Black to move.

- A) Evaluate Be3.
- B) Explain the idea behind the move 39...Nxe3



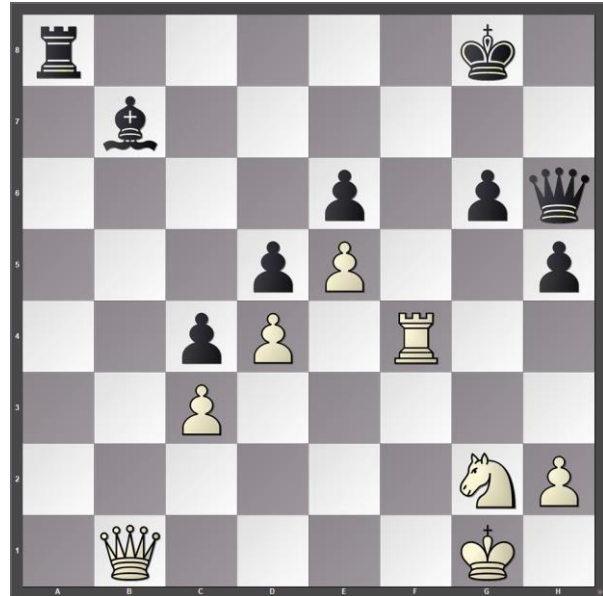
6. Black to move.

- A) Evaluate Bc8.
- B) What is the evaluation of the position?



7. White to move.

- A) Evaluate Be7.
- B) Find the strongest continuation for White.



8. Black to move.

- A) Evaluate Bb7.
- B) How would you continue with Black?