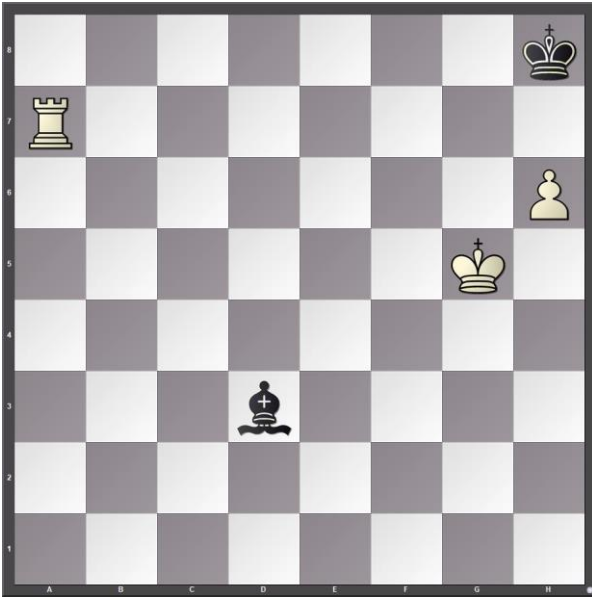
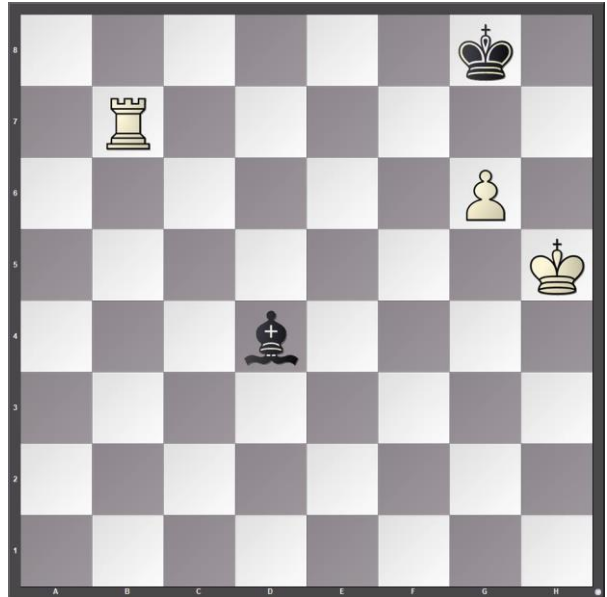


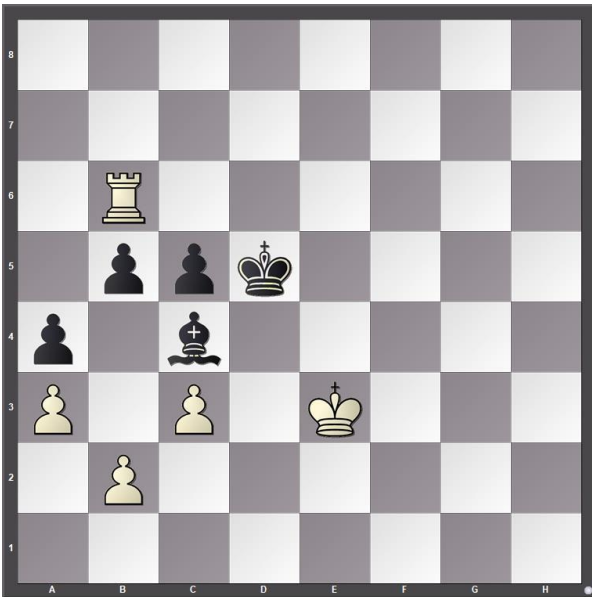
**Class 2: Rook versus bishop – the sharpest endgame?**  
 (Note: White is always at the lower end of the board, moving upwards.)



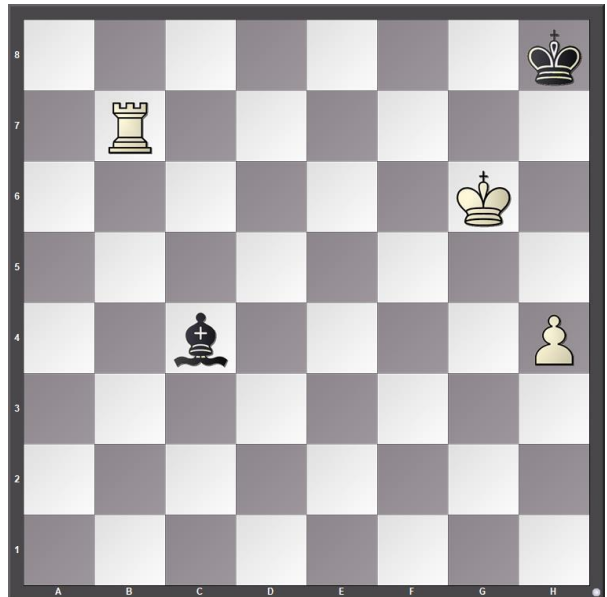
1. White to move – why is this position a fortress?



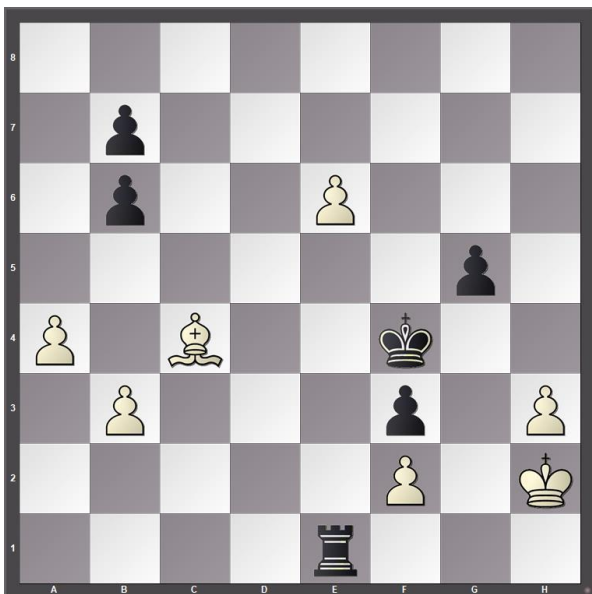
2. White to move and win.



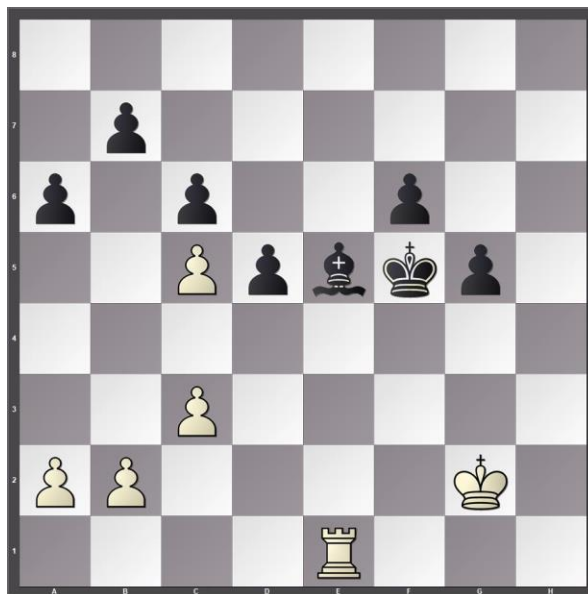
3. White to move – try to explain why it is winning. Also, try to find the winning plan.



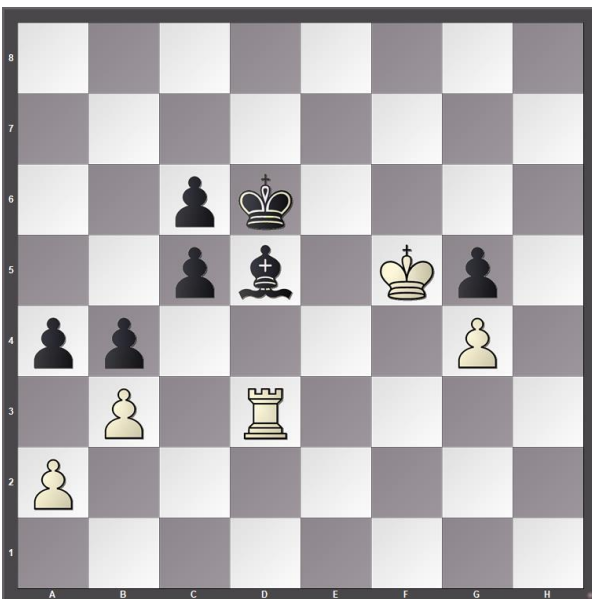
4. White to move and win.



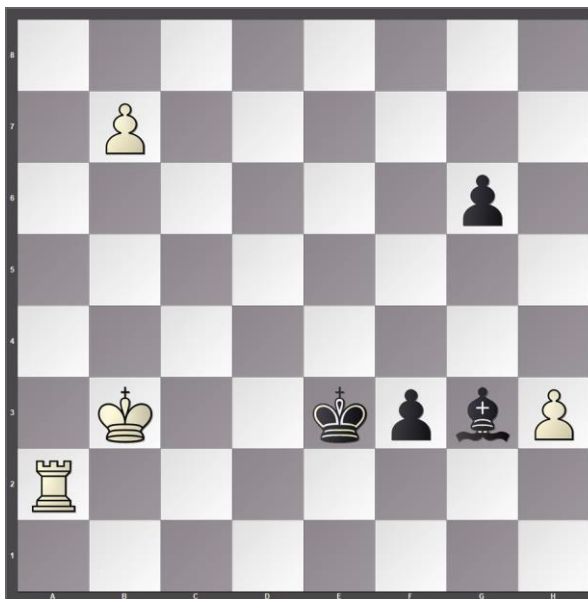
5. Black to move and win.



6. Black to move. White has just played 44.Re2-e1 to go Rh1-h7 and attack b7. How would you continue?



7. Black to move - find the winning idea.



8. White to move and win.